



University Partnerships Brochure 2022/23

Boosting social mobility since 2012

upReach are a social mobility charity working to create the conditions for undergraduates from less advantaged backgrounds to access and sustain top graduate jobs.

Socioeconomic disadvantage continues to be the most significant driver of inequality in terms of access to, and outcomes from, higher education.

We help less advantaged students from across the UK realise their potential by investing in pioneering technology to develop, design, and deliver highly personalised programmes of support.

Through successful partnerships with top employers and universities, we offer students access to a comprehensive range of 15 interventions to broaden their horizons, understand career pathways, and develop the skills, networks, and experiences needed for professional success.

For people from less advantaged backgrounds, socioeconomic barriers can restrict access to



career knowledge



professional networks



work experience



extracurricular activities

as well as hindering the development of soft skills

Founded in 2012 with an initial cohort of 39 students, upReach has grown to support 3,000 students in 2021/22. [Our 2022-25 Strategy](#) envisages further growth as we aim to support a further 1,000 students for a total of 4,000 on our programmes by 2025.

£30,000

Median salary of 2019 graduate in highly skilled full time employment 15 months after graduating

353

upReach Associates graduated from university in 2019

436

Graduate Roles, Internships, Placements and Spring Weeks secured by the 2019 graduates prior to graduation

Our Associates

Students from less advantaged backgrounds are studying Higher Education at higher rates than ever before but this has not translated to success in competitive graduate programmes at leading firms or in increased income.

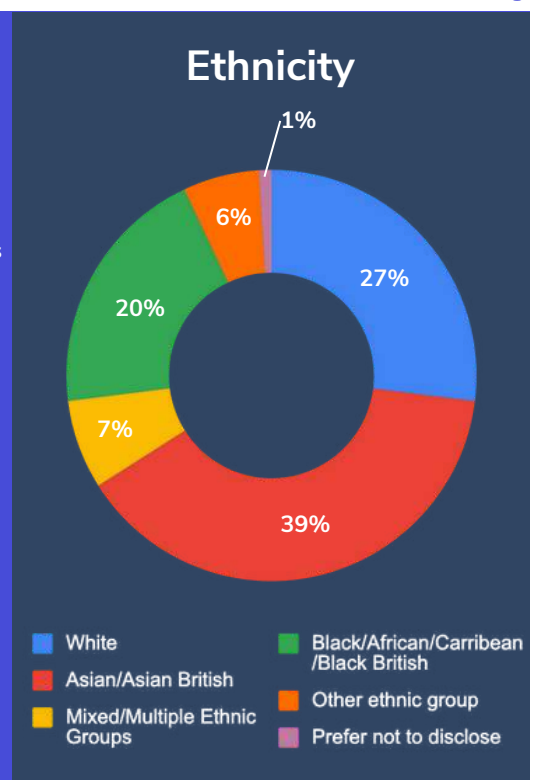
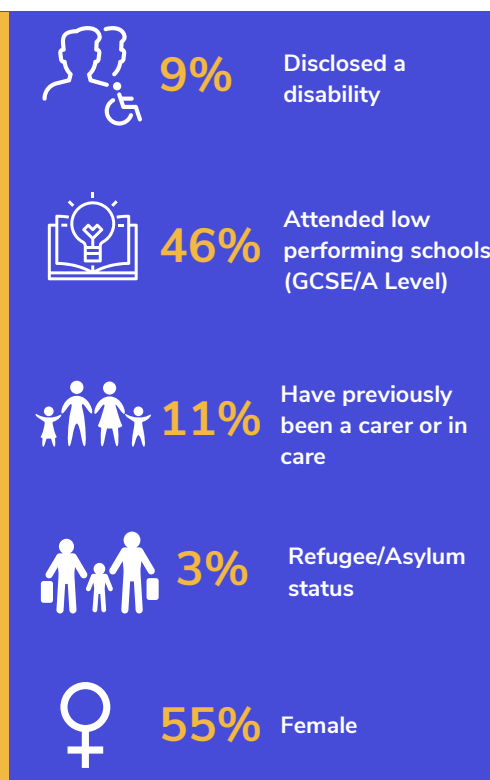
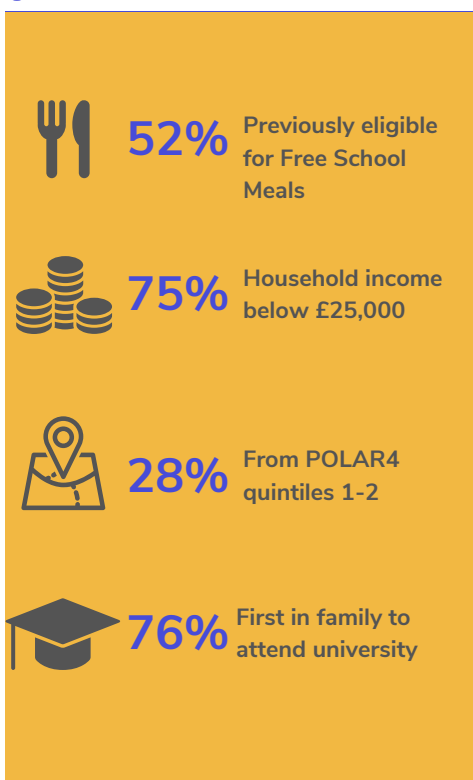
upReach help students achieve their career potential by providing an intensive programme of support that addresses socioeconomic barriers to employment. We also work to influence the hiring behaviours of top organisations so that a commitment to equal opportunity permeates their organisational culture and they recognise the social and economic value of greater diversity within their workforce.

Who we work with: our 3,000 Associates

Minimum eligibility criteria



The diversity of our Associates



Our Programme of Support

15 tailored interventions to help address the employability skills gap

Aspire	Develop	Succeed
 Insight Days  Careers Academies  CV Reviews  1-to-1 Coaching Calls  Online Resources	 Skills Workshops  Video Forums  Career Courses  Professional Mentors  Exclusive Work Experience	 Application Reviews  Practice Online Tests  Mock Interviews  Mock Assessment Centres  Social Mobility Network

Our University Partnerships

upReach Associates study at over 80 different universities across the UK, and we work closely with Widening Participation teams and Careers Services to provide support.

upReach's intensive and personalised programmes of support help universities achieve their progression goals while simultaneously increasing the proportion of less advantaged students that secure graduate jobs. Our expertise helps increase engagement, close the employability skills gap and boost graduate outcomes.

We offer three different types of partnerships for universities to collaborate with us on:

<h3 style="text-align: center;">Rise</h3> <p style="text-align: center;">Our comprehensive programme of personalised careers support for undergraduates.</p> <p style="text-align: center;">See Page 5 for further information</p>	<h3 style="text-align: center;">SMN</h3> <p style="text-align: center;">Access to hundreds of professionals on our exclusive networking platform - the Social Mobility Network (SMN).</p> <p style="text-align: center;">See Page 7 for further information</p>	<h3 style="text-align: center;">Progression Partners</h3> <p style="text-align: center;">A community of HE Professionals discussing Progression-related work.</p> <p style="text-align: center;">See Page 8 for further information</p>
--	---	---

RISE Partnerships

upReach's Rise Programme is a programme of personalised careers support for undergraduates. Rise Associates have the flexibility to explore multiple sectors - including receiving start-to-finish application support to any employer/sector. The programme helps students aspire to top graduate roles, develop their skills, and then succeed when applying and joining the world of work.

Each Associate is paired with a dedicated Programme Coordinator focussed on personal and professional development, using the Associates' [Graduate Employability Framework](#) results to tailor their support. Our Programme Coordinators build long term relationships with Associates throughout their time with upReach. They also steer Associates through our 15 core interventions including daily Video Forums, being matched with a Career Mentor, as well as exclusive Employer Events and Work Experience Opportunities delivered with our Employer Partners.

The Rise Programme complements university-led initiatives to ensure students can maximise all the careers support available to them. Rise partnerships are part-sponsored by universities for up to 40% of the costs of the programme depending on the size of the Associate cohort.

Rise University Partners benefit from:

- The option to identify specific student groups to benefit from the programme, supporting universities to achieve their APP goals.
- Monthly meetings to provide updates on the programme and receive a monthly engagement report.
- A dedicated contact who will lead your partnership and help personalise the support your students receive in conversation with your teams.
- Comprehensive reports twice a year sharing the impact of the programme and insights into all of your students supported through upReach.
- A regular newsletter on a summary of upReach happening.
- A dedicated page on our student intranet exclusively for your students to view their university's careers, wellbeing and financial support services and more.
- On campus workshops delivered 3 times a year and tailored to your students' needs for partners with over 45 students on a Rise Programme.



Testimonials from RISE Associates



Forida Rahman
King's College London

"It is very easy to feel overwhelmed about the prospect of the future, especially due to a lack of knowledge and experience. Through the **Skills Workshops, 1-to-1 sessions and Insight Days**, I was able to make successful applications and hold my own in interviews. upReach gave me confidence that I was able to be successful in whatever career I chose."



Kieran Barry
University of Warwick

"The confidence upReach has given me has allowed me to set higher goals and ambitions for myself. The employers I have been able to come into contact with through upReach are unmatched, and have helped me realise that my ambitions and goals are more achievable than I ever thought they were."



Chloe Kunz
University of Exeter

"upReach has provided pivotal support throughout my University studies, ranging from **Insight Days and Skills Workshops to Mock Interviews and Application Reviews**. My Programme Coordinator was essential when making an application, taking the time to read through my application and provide detailed feedback on how to improve. As a result, I can't stress enough how much upReach has assisted me."



Shanese Youngs
University of Leeds

"My professional skill-set has benefited from engaging in **1-to-1s and Mock Interviews** with my Programme Coordinator. They have given me the relevant guidance to make successful applications and give strong answers in interviews and assessment centres. Moreover, my Programme Coordinator has given me the encouragement that I needed to be confident in myself. "

Social Mobility Network (SMN) Partnerships

upReach's SMN Partnerships enable universities to take advantage of the networking opportunities that upReach have created for their Associates. Access to networks is a major driver of the progression gap as inferior access to networks means it is harder for less advantaged students to gain commercial awareness, work experience, and develop important social and cultural capital.

SMN allows students to access multiple professionals at once, establishing networks for those without a network and enabling students to draw upon a broad range of experiences. Through offering one-off mentoring interactions such as Career Chats, Expert Advice, and Mock Interviews, students using SMN are able to aspire to top graduate roles, develop their skills, and succeed in the graduate market.

SMN has over 200 Mentors on the platform working across a wide range of sectors and firms such as Bank of America, Civil Service Fast Stream and Allen & Overy. SMN Partnerships enable universities to onboard an unlimited number of students onto the platform for a fixed flat rate, paid as a yearly subscription, with onboarded students able to access SMN for life.

SMN University Partners benefit from:

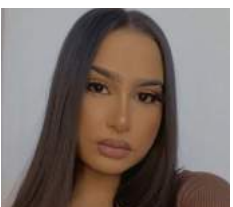
- The option to identify specific student groups to benefit from the programme, supporting universities to achieve their APP goals.
- Students from SMN Partner Universities will be able to fully access the platform and its professionals for life.
- Access dashboard data which tracks the number of interactions for each student enrolled on the platform.

SMN Testimonials



Jack Moore
University of Durham

"SMN has given me unrivalled access to career professionals. One of the hardest things to do as an underprivileged student is to network as we do not have these connections from family and friends. The main feature from the platform that's helped me is the "Mock Interview" function as connecting with professionals to conduct Mock Interviews has provided me with invaluable advice"



Puja Sonagara
University of Birmingham

"SMN has enabled me to ask company-related questions and specific career pathway questions. I particularly like the "Career Chat" function as I was able to get in touch with many professionals who gave me great advice on how I could further develop my technical and commercial awareness. This platform has allowed me to build my network and gain new insights."

Progression Partnerships

upReach Progression Partners are a community of HE professionals who are actively engaged in Progression work. As upReach's Associates' come from a wide range of universities across the UK, upReach created Progression Partners to facilitate discussions on key themes related to Progression work with our Rise Partners and well as non-partner universities who are passionate about Progression.

Progression Partnerships come at no cost to universities, with existing Rise partners automatically receiving the additional benefits of the Progression Partnership.

Progression Partners benefit from:

- Termly Virtual Breakfast Clubs bringing together WP/Careers Professionals to discuss key themes, goals, and challenges related to Progression work.
- Receiving the latest news about upReach and our programmes including when additional spaces become available.

Additionally, as a Progression Partner where at least 25 of your students join as upReach Associates in the current academic year you will receive:

- Annual summary of how many of your students are supported by upReach.
- Insights into your students career interests during their participation in upReach Programmes

What will my university need to do as an upReach Progression Partner?

- Actively share and promote upReach Programme opportunities to support student progression - you will receive promotional materials to support this.

Associate Testimonials



Jiaping Guan
University of Glasgow

"Since I became an upReach Associate, my Programme Coordinator reviewed my CV and encouraged me to attend Video Forums to develop my commercial awareness. By taking part in Skills Workshops and working with students from across the UK, I also improved my teamwork skills. Additionally, having attended Insight Days with employers, I was able to improve my networking abilities."



Jadesola Olusanya
University of Birmingham

"I have learnt so much from the services and resources available on the upReach platform. upReach has given me the chance to improve my skills and develop my employability and I now feel more prepared to take on the challenges associated with applications and other career endeavours that I want to take on in the future."

Employer Partners



University Partners



Programme Funders



Awards



If you're interested in finding out more, please contact:

The Partnerships Team
partnerships@upreach.org.uk